

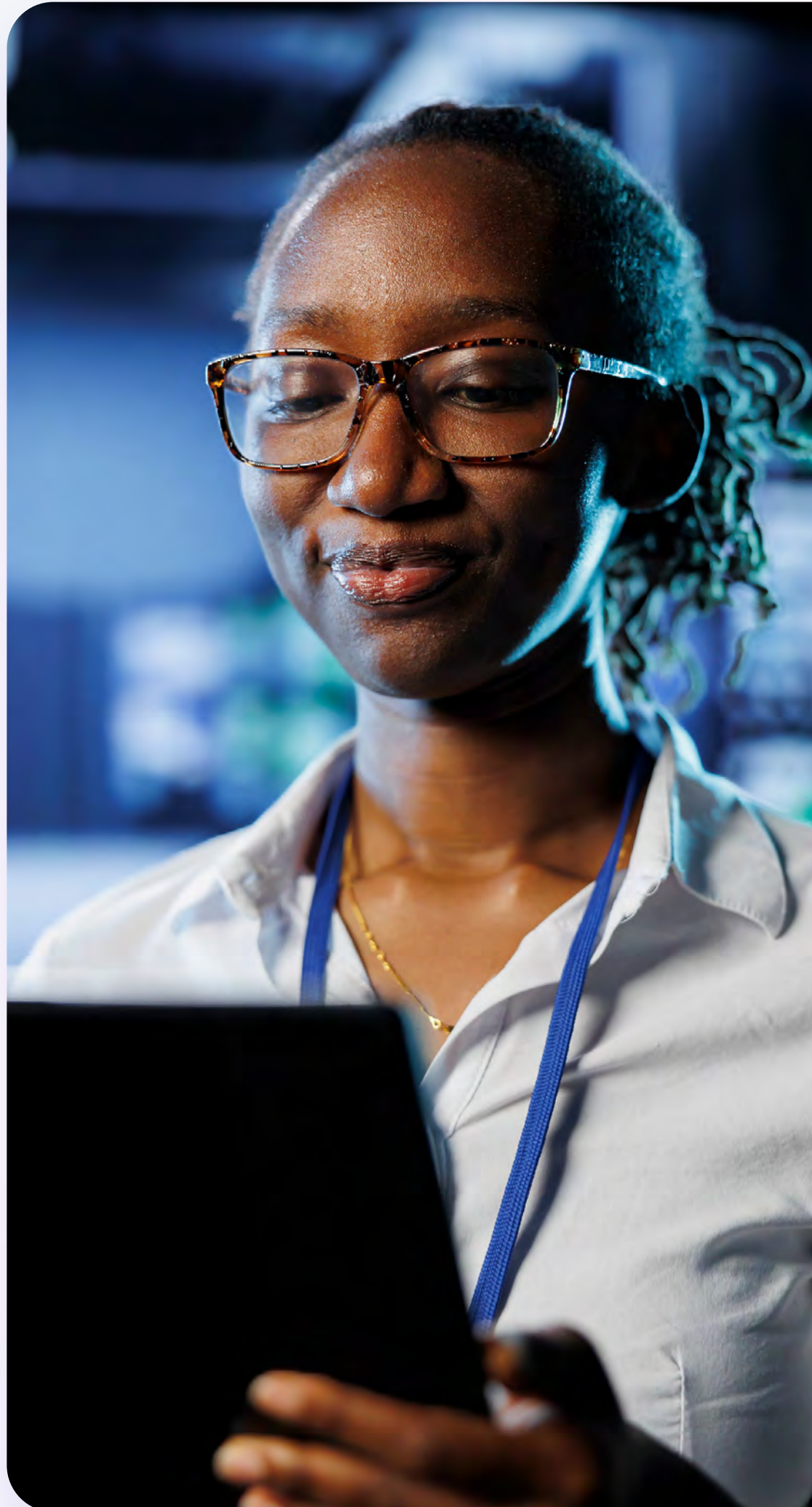


# Go at the speed you want, when you want

## Discover Wholesale Ethernet Bandwidth on Demand

For some customers in today's Ethernet market, changing bandwidth speeds in response to demand is difficult, slow and expensive. With Wholesale Ethernet Bandwidth on Demand, your customers can modify their Etherflow bandwidth quickly, easily and cost-effectively.





## Bandwidth on Demand lets you:

- Respond both proactively and reactively to changing bandwidth needs.
- Upgrade or downgrade customer bandwidth in less than ten minutes with our super-quick lead time
- Change an Etherflow VLAN and perform A or B End Etherflow changes in less than 30 minutes.
- Pay just one modification fee for each 12-month period.
- Offer cost-effective and pay-as-you-go bandwidth options.
- Get flexibility on new services and your customer's existing estate.
- Schedule changes to suit your needs.

## Features that make a difference

With our market-leading flexibility, you can go to the online portal and choose a 30-minute time slot for an Etherflow change. With this approach, there's a 24-hour modification time. However, if you need to alter your bandwidth speeds more urgently, you can now opt for the 'immediate' Etherflow modification, which will make the change in less than ten minutes – or less than 30 minutes for virtual local area network (VLAN) Etherflow changes.

With Bandwidth on Demand, end users can make as many changes as they want to meet their evolving needs and only have to pay a single annual modification fee. We've also slashed the typical minimum service period for modifications like this in the market – from 30 days to 24 hours, making life much easier and more cost-efficient.

Whether you choose an immediate or a planned 30-minute change to your Etherflow, regardless if it's a new service or part of your existing estate, you'll benefit from our new commercial terms and charges, as Bandwidth on Demand applies to all Etherflow Connected services.

## Big benefits

- **Cost-effectiveness:** Our prices are highly competitive and a single modification charge combined with 'pay as you go' billing results in a lower total cost of ownership (TCO).
- **Service agility:** End users have previously been able to schedule bandwidth changes for forthcoming peak periods ahead of time. With Bandwidth on Demand, they can now also make daily changes in response to any unexpected issues that arise, such as a sudden demand for extra bandwidth.
- **Speed and responsiveness:** Bandwidth on Demand provides market-leading times of under 10 minutes for making bandwidth changes. This enables you to be more agile and responsive to your customers' changing connectivity needs in a market where your competitors charge more and take longer to perform these changes.
- **A differentiated solution:** Our service enables you to provide a value-added Ethernet offering with market-leading flexibility and commercials. This will protect your Ethernet customer base while also giving you inroads into the on-demand world of networking.



## Why us?

- **Purpose-built networks:** Our Ethernet portfolio connects you to our 21C Ethernet platform – custom built for high-performance, high-availability business traffic.
- **Empowering the channel:** Our growing portfolio gives you high bandwidth and value-add connectivity solutions so you can deliver the goods.
- **Speedy delivery:** Our installation lead times are consistently fast, so you see revenue sooner and can offer better, quicker service.
- **Trusted service:** We manage around 200,000 Ethernet circuits and over 27Tbps of peak core traffic – and we support government and critical national infrastructure (CNI).
- **Working with us is easy:** Engaging with us is simple, thanks to our latest online pricing and ordering tools, and APIs.
- **Unrivalled reach:** We invest £3.7bn in our network each year, and we're expanding our coverage to make sure you're always getting the best pricing and availability.
- **Excellent performance:** Our network offers a 99.999% availability target and Wholesale Ethernet services are backed by a 5-hour target fix SLA.
- **Certified secure:** We have more than 40,000 devices monitoring the health of our network, around the clock.
- **A wide range of access products:** We offer everything from FTTP to Data Centre Access – giving you great flexibility, and options for different needs and locations.
- **A resilient backhaul network:** We use double and triple resilience in our core, with intelligent routing that supports an always-on platform for critical business traffic.

## Service requirements

Bandwidth on Demand is available only on our Wholesale Etherflow Connected solutions, on 100Mbps and 1Gbps circuits. It's not available with Etherflow Dynamic or Direct Internet Access (DIA) services.

---

### Learn more

Call: [0800 671 045](tel:0800671045)

Email: [clientreception@bt.com](mailto:clientreception@bt.com)

Visit: [btwholesale.com/ethernet](https://btwholesale.com/ethernet)

---

#### Offices Worldwide

The services described in this publication are subject to availability and may be modified from time to time. Services and equipment are provided subject to British Telecommunications plc's respective standard conditions of contract. Nothing in this publication forms any part of any contract. © British Telecommunications plc 2024. Registered office: BT Group plc, 1 Braham Street, London, E1 8EE. Registered in England No. 1800000.